

Recycling

One word, many ways.

Recycling of mineral wool waste at the production plant.

We are living in a time where it is becoming ever more important to recycle waste and conserve resources. It is an important issue not just from an environmental protection viewpoint but also for economic reasons. On the one hand, this issues can be of interest to a company in terms of operating in a cost-efficient manner and in terms of its public image on the other.

The best waste is waste that never existed in the first place. A lot can be achieved by optimising production processes. If it is no longer possible to further optimise such processes, attempts must be made to ensure that the products created are fed back into the production process in the best possible way.

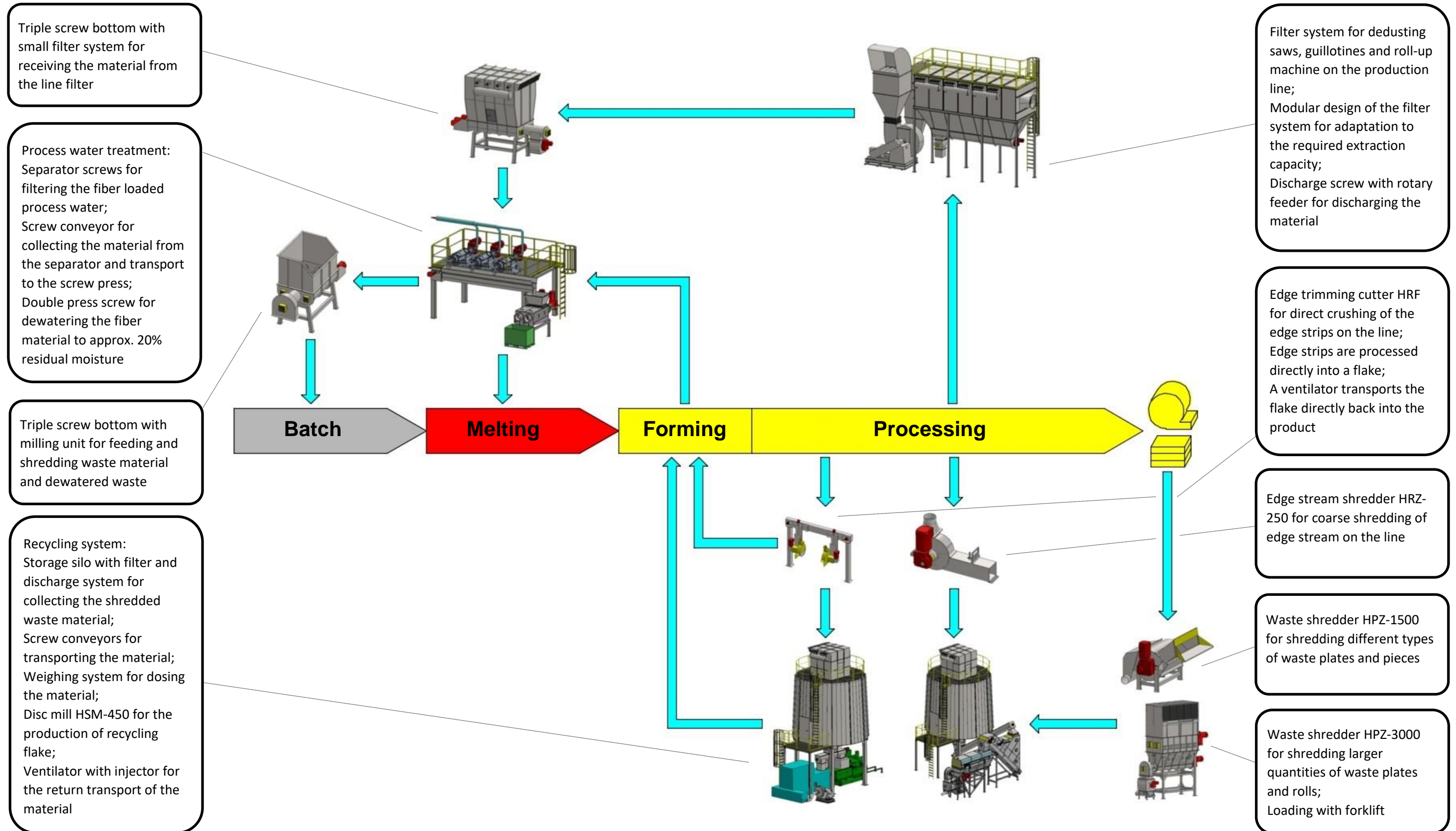
A mineral wool production line is a structure that has grown over decades to some extent and it is a structure that has changed and developed over the years. A recycling system needs to fit into this specific structure. All components need to adapt to local conditions and take account of existing systems for integration to be possible.

With almost 30 years' experience in the field of mineral wool recycling, we would like to support you in this task - be it with the installation of a completely new recycling system, the optimisation of an existing system or the improvement of individual components. Our systems have a proven track record in practice spanning many years and are undergoing continuous further developed.

Should you be interested in our products, we would be happy to respond to your inquiry at any time.



We would like to use this line layout to show you the fields in which we can support you with our systems.





Hansek Maschinenbau GmbH
Daruper Straße 2-4
D-48727 Billerbeck

Phone: +49(0)2543 - 930 890 0
Fax: +49(0)2543 - 930 890 2

Mail: info@hansek.de
Web: www.hansek.de

HANSEK
MASCHINENBAU